

Analogue load share

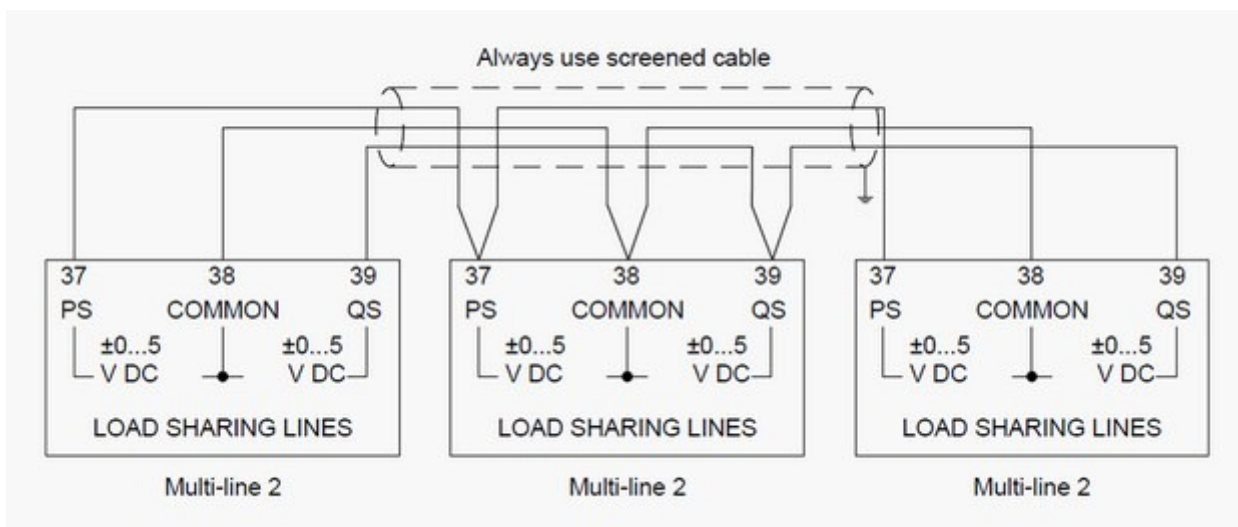
[Top](#) [Previous](#) [Next](#)

This use case is about how to configure an analogue load share.

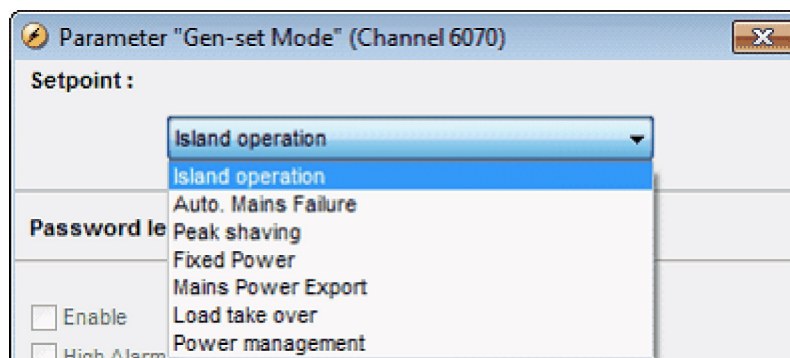
Note: Option G3 must be installed for active load sharing and option D1 must be installed for reactive load sharing. See option G3 manual and option D1 manual for more information.

- 1) Connect analog load share line between gensets

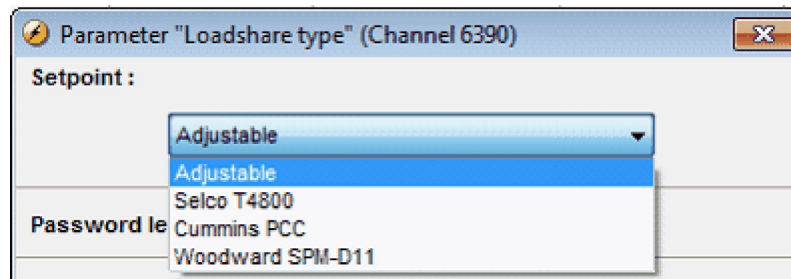
Term.	Function	Technical data	Description	Comment
37	-5/+5V DC	Analogue I/O	Active load sharing line	Requires option G3
38	Com.	Common	Common	
39	-5/+5V DC	Analogue I/O	Reactive load sharing	Requires option D1/G3



- 2) Set AGC to "Island" mode in menu 6070



- 3) Set load share type in menu 6390 to match other load sharing device (if analog load sharing with another DEIF device, set to "Adjustable")
 - a. Adjustable
 - b. Selco T4800
 - c. Cummins PCC
 - d. Woodward SPM-D11



- 4) If menu 6390 is set to "Adjustable", set signal level in menu 6380 to match other load sharing device, 1-5V (4V is default)
- If menu 6390 is set to Selco, Cummins, or Woodward, the setting in menu 6380 is ignored
 - If load sharing with another DEIF device, ensure menu 6390 setting is identical in all units

