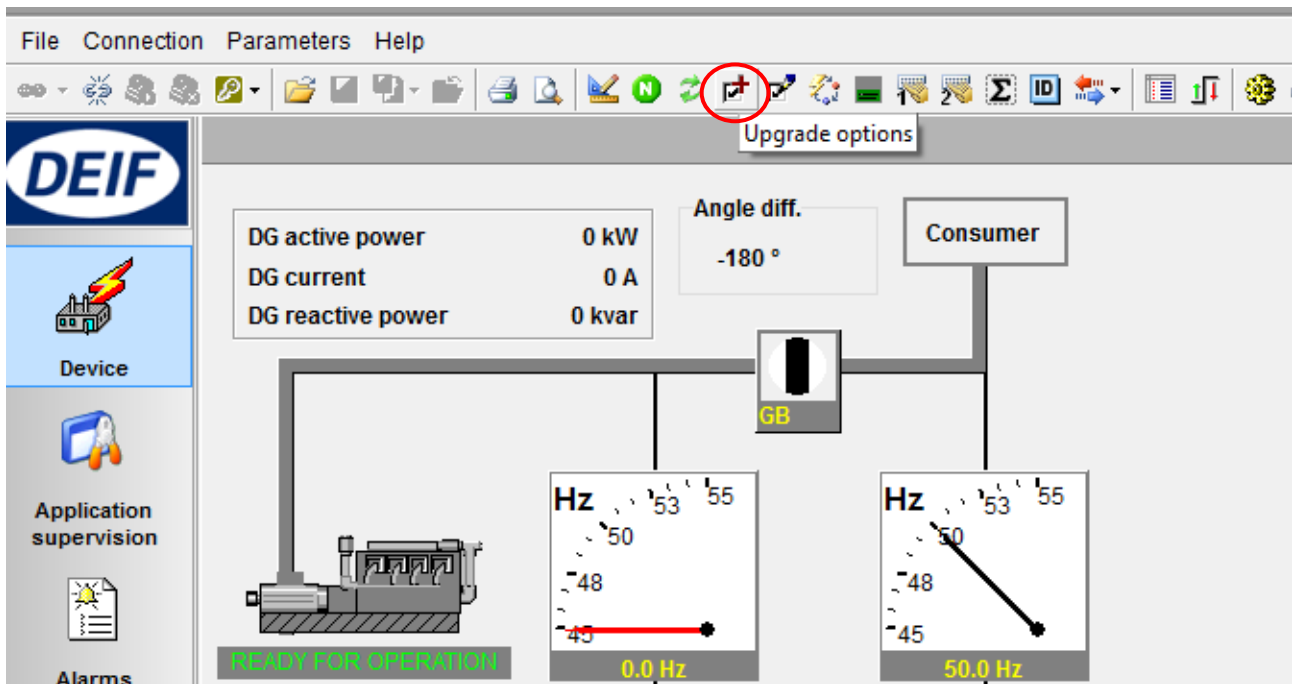


1. Open USW and connect to PPM/PPU-unit
2. Click the upgrade options icon



3. Fill out the fields

Options wizard

Step 1/5 (Hardware info)

Provide information about your device:

Device number \* 6907 If you are online, this number should be displayed in the edit field. If you are offline, you can enter a device number manually in the edit field.

Device type \* PPM-3 DG If you are online, you should actually see your actual device type. If you are offline, you can freely choose the type.

Firmware version 3.08.2 rev. 19364 Firmware version of device you want to upgrade. If you are online, this field is filled automatically.

Order number \* Printed on a label on the device. (example: 100012345.10)

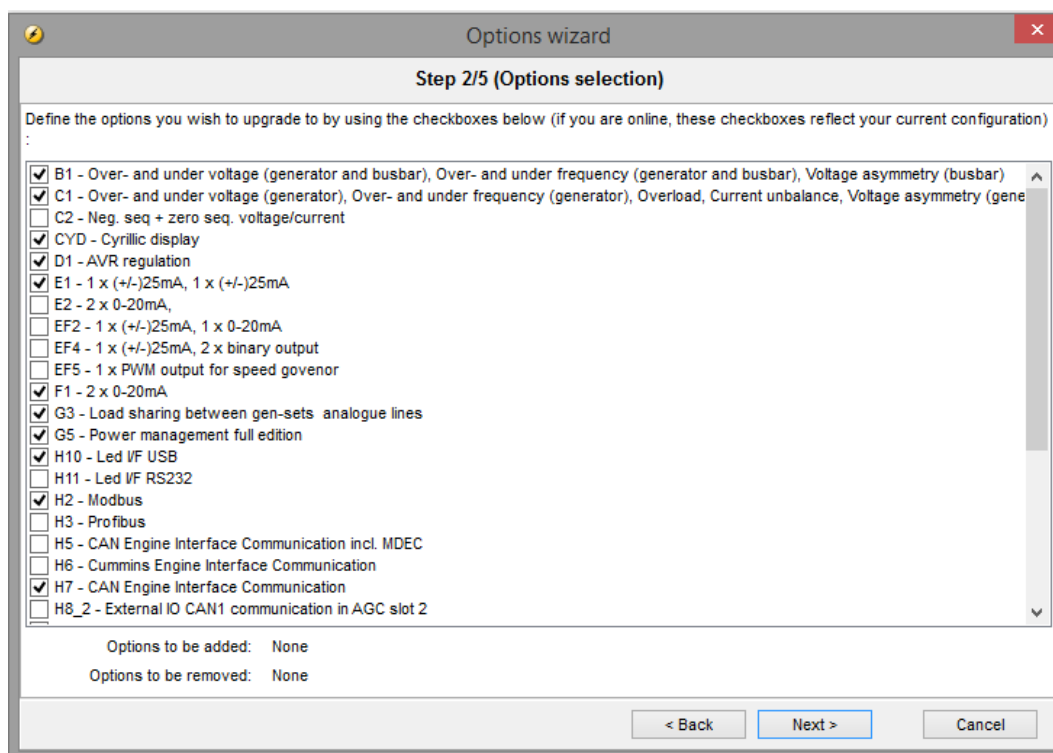
Service order number Printed on a label on the device. (example: 211234)

Device serial number Printed on a label on the device. (example: 451234.0001)

Fields marked with \* are required fields

< Back Next > Cancel

#### 4. Mark required options



The screenshot shows the 'Options wizard' window at Step 2/5, titled 'Options selection'. The instruction reads: 'Define the options you wish to upgrade to by using the checkboxes below (if you are online, these checkboxes reflect your current configuration)'. A list of options is shown with checkboxes. Most are checked, including B1, C1, CYD, D1, E1, F1, G3, G5, H10, H11, H2, H7, and H8\_2. Unchecked options include C2, E2, EF2, EF4, EF5, H3, H5, H6, and H8. Below the list, it states 'Options to be added: None' and 'Options to be removed: None'. Navigation buttons at the bottom are '< Back', 'Next >', and 'Cancel'.

**Options wizard**

**Step 2/5 (Options selection)**

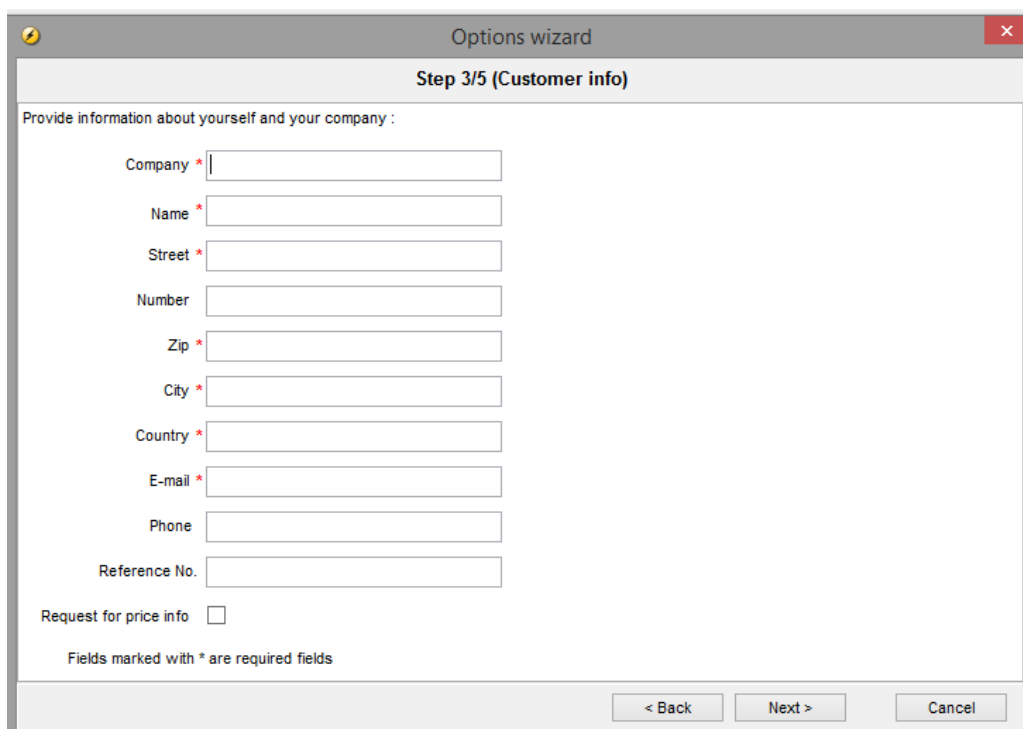
Define the options you wish to upgrade to by using the checkboxes below (if you are online, these checkboxes reflect your current configuration)

- ☒ B1 - Over- and under voltage (generator and busbar), Over- and under frequency (generator and busbar), Voltage asymmetry (busbar)
- ☒ C1 - Over- and under voltage (generator), Over- and under frequency (generator), Overload, Current unbalance, Voltage asymmetry (generator)
- ☐ C2 - Neg. seq + zero seq. voltage/current
- ☒ CYD - Cyrillic display
- ☒ D1 - AVR regulation
- ☒ E1 - 1 x (+/-)25mA, 1 x (+/-)25mA
- ☐ E2 - 2 x 0-20mA
- ☐ EF2 - 1 x (+/-)25mA, 1 x 0-20mA
- ☐ EF4 - 1 x (+/-)25mA, 2 x binary output
- ☐ EF5 - 1 x PWM output for speed governor
- ☒ F1 - 2 x 0-20mA
- ☒ G3 - Load sharing between gen-sets analogue lines
- ☒ G5 - Power management full edition
- ☒ H10 - Led VF USB
- ☐ H11 - Led VF RS232
- ☒ H2 - Modbus
- ☐ H3 - Profibus
- ☐ H5 - CAN Engine Interface Communication incl. MDEC
- ☐ H6 - Cummins Engine Interface Communication
- ☒ H7 - CAN Engine Interface Communication
- ☐ H8\_2 - External IO CAN1 communication in AGC slot 2

Options to be added: None  
Options to be removed: None

< Back   Next >   Cancel

#### 5. Fill out fields



The screenshot shows the 'Options wizard' window at Step 3/5, titled 'Customer info'. The instruction reads: 'Provide information about yourself and your company :'. There are ten text input fields: Company, Name, Street, Number, Zip, City, Country, E-mail, Phone, and Reference No. The first nine fields have a red asterisk indicating they are required. Below the fields is a checkbox for 'Request for price info'. A note at the bottom states 'Fields marked with \* are required fields'. Navigation buttons at the bottom are '< Back', 'Next >', and 'Cancel'.

**Options wizard**

**Step 3/5 (Customer info)**

Provide information about yourself and your company :

Company \*

Name \*

Street \*

Number

Zip \*

City \*

Country \*

E-mail \*

Phone

Reference No.

Request for price info ☐

Fields marked with \* are required fields

< Back   Next >   Cancel

6. Fill out fields

Options wizard

Step 4/5 (Contact for order)

Select contact to send your order to, or enter an address manually :

Choose contact

Address \*

E-mail

Fields marked with \* are required fields

< Back Next > Cancel

7. When all previous steps are done an option key is showed in the window marked with a red circle – this option key is sent to DEIF to get back an option upgrade key

Options wizard

Step 5/5 (Order overview)

Options to be added:

Options to be removed:

Customer:

Address:

Reference No:

This is the key you have to provide, in order to upgrade to the options you have chosen :

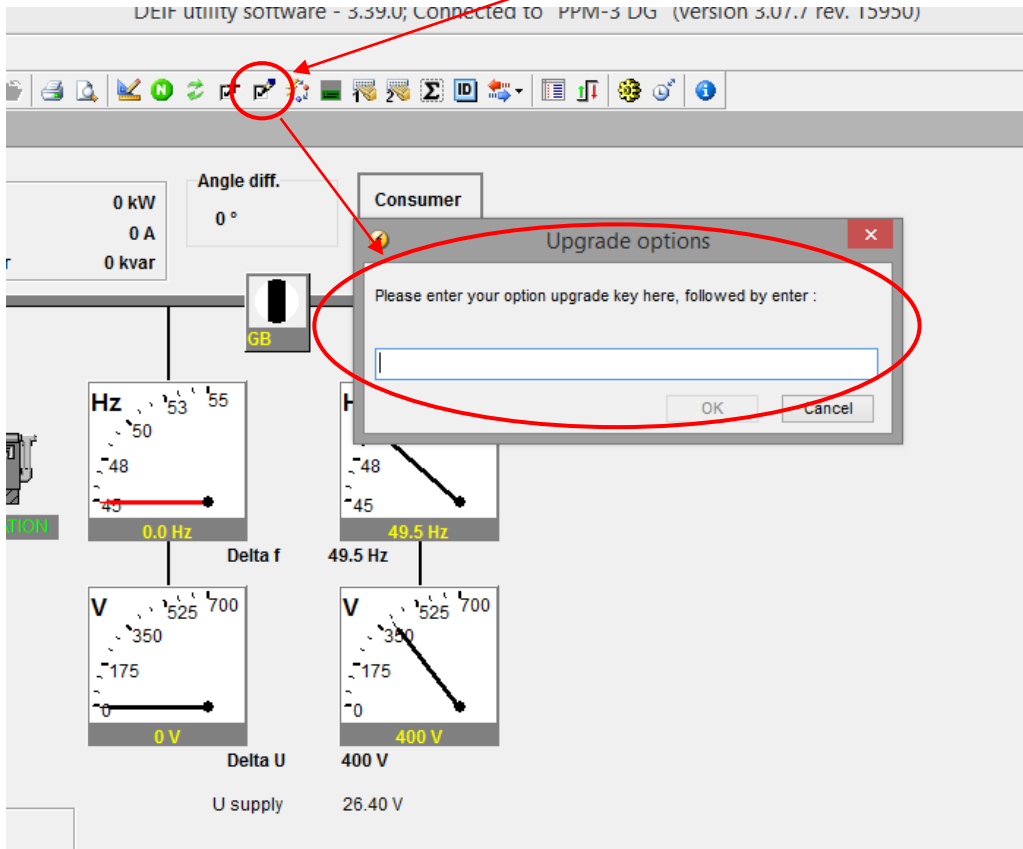
Send order as email (You need to have default email client with MAPI support)

Preview order form

Save order as PDF file

< Back Finish Cancel

When receiving the option upgrade key simply click the “write new options” icon. Then copy and paste new key into field marked with red circle and press OK.



Unit is now upgraded with new option 😊